

**Welcome to  
MOE Kindergarten  
@Meridian**

**Open House 2025**



## Today's Programme

Time	Programme	By
8.30am to 8.50am	Registration	MK Teachers
8.50am to 9.00am	Welcome Address by School Principal	Mrs Lim- Chew Siang Jiun
9.00am to 10.00am	MK and KCare Briefing	CH/DYCH MK Teachers/ KCare Supervisor
10.00am to 11.30am	MK Experience and MK Tour	MK Teachers
11.30am to 12.30pm	KCare Tour	KCare Teachers
12.30pm	End of Open House	

**Welcome Address  
by Mrs Lim - Chew  
Siang Jiun**

**Principal, Meridian Primary School**



# Thank You!

Keep in touch with us.



<https://meridianpri.moe.edu.sg/>



[mk\\_meridian@moe.edu.sg](mailto:mk_meridian@moe.edu.sg)



<https://go.gov.sg/mdpsfb>



<https://go.gov.sg/mdpsig>



**MERIDIAN**  
PRIMARY SCHOOL

*Nurturing Future Learners, Future Citizens, Future Leaders*

# Welcome Message by Ms Winnie Lau

Centre Head, MK@Meridian

# About our MK!

- 🎈 Our Team
- 🎈 MK Programme, Curriculum, Timetable
- 🎈 MK Learning Environment
- 🎈 MK Fees and Fee Assistance Scheme
- 🎈 Kindergarten Care (KCare)
- 🎈 A Smooth Transition into MK
- 🎈 MK Partnerships
- 🎈 Why Choose MK?
- 🎈 Info on MK Registration Exercise







# Our Team



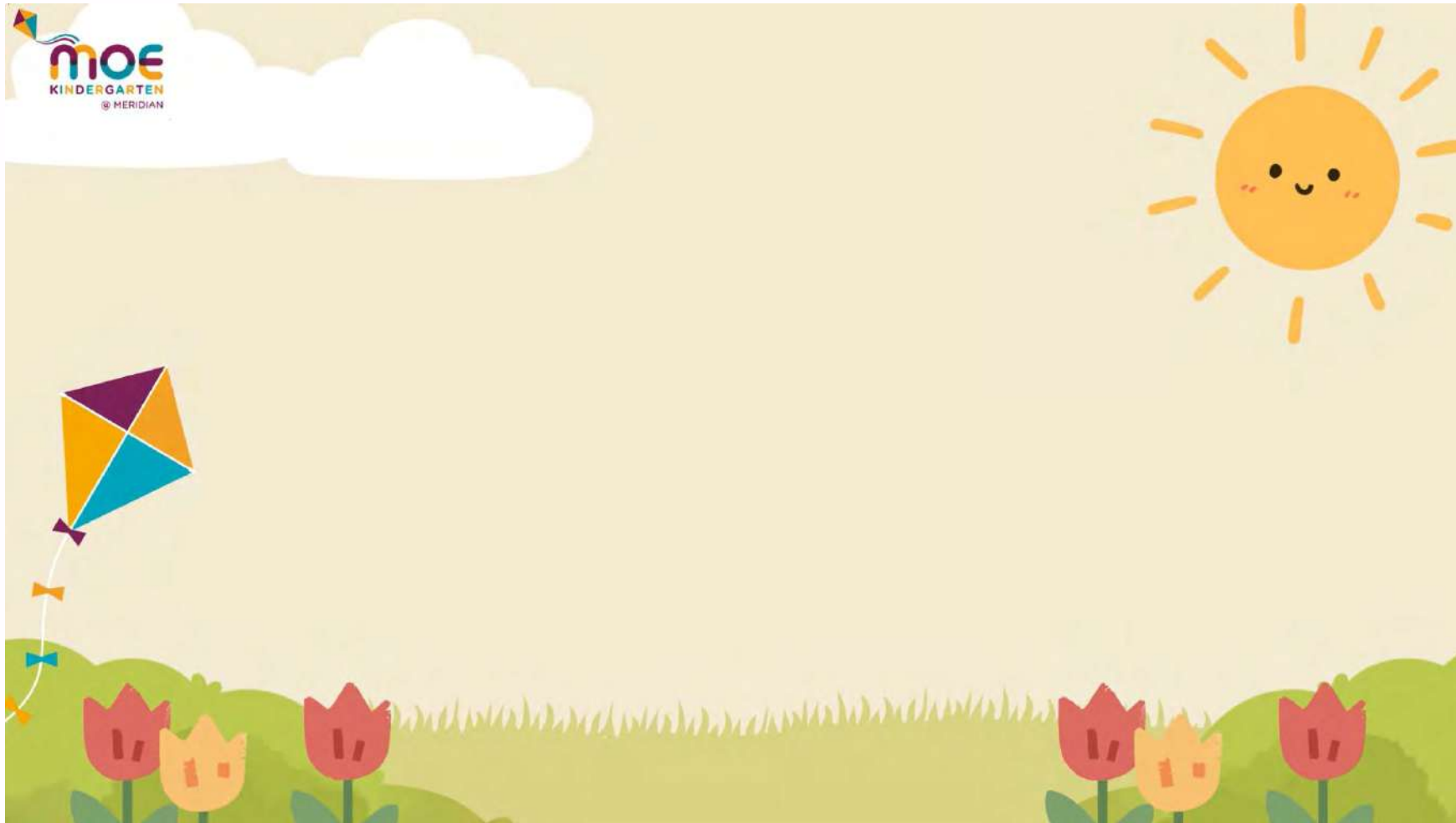


# MK Programme

-  Two levels – Kindergarten 1 and Kindergarten 2
-  Four-hour daily programme, with optional full-day Kindergarten Care (KCare) service
-  Offers three Mother Tongue Languages (Chinese, Malay and Tamil)
-  Follows MOE school calendar of four school terms, including scheduled school and public holidays

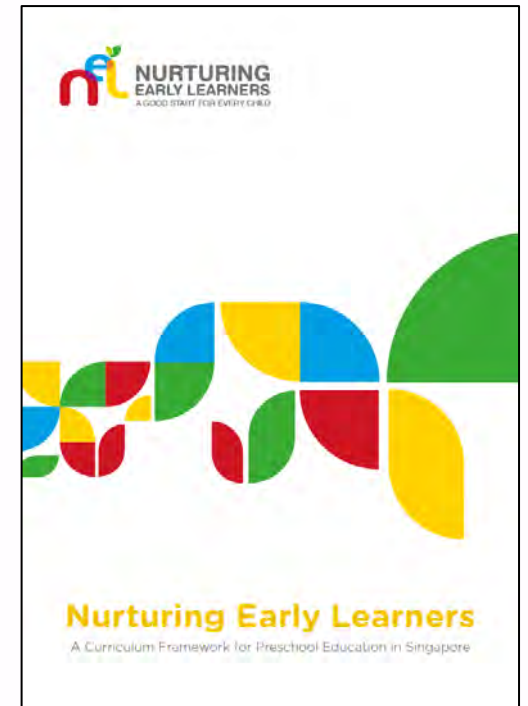


# MK Programme - A Day at an MK



# MK Curriculum

- ✧ Designed by MOE curriculum specialists and educators with knowledge and experience in early childhood education and primary school curriculum
- ✧ Based on the beliefs and principles in the Nurturing Early Learners Framework, developed by MOE, to guide quality preschool teaching and learning of children in Singapore
- ✧ Believes that children are joyful, curious, active and competent learners who play, learn and grow with others in a diverse and multi-cultural community
- ✧ Emphasises holistic development through an integrated approach to teaching and learning
- ✧ Promotes learning through quality interactions and purposeful play



# MK Curriculum

- ✧ Consists of two flagship programmes:
  - **HI-Light Programme** and
  - **Starlight Literacy** (English and Mother Tongue Languages) Programme
- ✧ Has activities around four broad themes and relevant topics
- ✧ Uses teaching and learning resources with a **distinctive Singapore flavour**
- ✧ Includes **Weeks of Wonder (WoW) projects** to encourage self-motivated learning through exploration and discovery



# HI-Light Programme

The HI-Light Programme is designed to support the holistic development of children by nurturing in them **values, social and emotional skills** and **learning dispositions**, as well as **knowledge and skills** across the following **five learning areas** through an integrated approach:

- 🎨 Aesthetics and Creative Expression
- 🌍 Discovery of the World
- 🏃 Health, Safety and Motor Skills Development
- 📖 Language and Literacy
- 🔢 Numeracy





# Starlight Literacy Programme

- ✈️ Nurtures early childhood bilingualism
- ✈️ Offered in English and three Mother Tongue Languages (Chinese, Malay and Tamil)
- ✈️ Focuses on developing children's interest in language learning, listening, speaking and early reading and writing skills
- ✈️ Uses Big Books, songs and games set in the local context to make learning fun and engaging
- ✈️ Provides opportunities for children to communicate in English and their Mother Tongue Language with confidence and be aware of local traditions and customs
- ✈️ Encourages families to be involved in activities to enthuse children in language learning





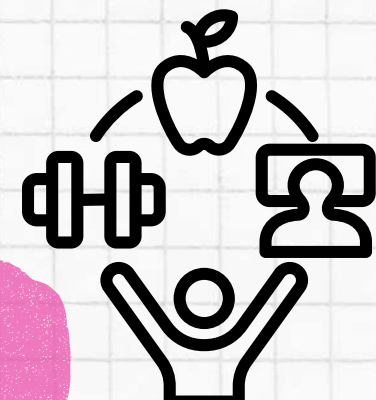
## Sample MK Timetable (AM Session)

Time	Monday	Tuesday	Wednesday	Thursday	Friday
7.50 – 8.00 a.m.	Arrival and Health Check				
8.00 – 8.10 a.m.	Welcome and Circle Time (10 min)				
8.10 – 8.40 a.m.	Outdoor Play (30 min)				
8.40 – 9.20 a.m.	Starlight Literacy (English Language) Programme (40 min)				
9.20 – 9.40 a.m.	Snack Time (20 min)				
9.40 – 10.00 a.m.	Indoor Play (20 min)				
10.00 – 10.50 a.m.	HI-Light Programme (50 min)				
10.50 – 11.50 a.m.	Starlight Literacy (Mother Tongue) Programme (60 min)				
11.50 – 12.00 p.m.	Transition & Dismissal (10 min)				

*Note: Sequence of activities may differ from class to class*

Live  
HEALTHY

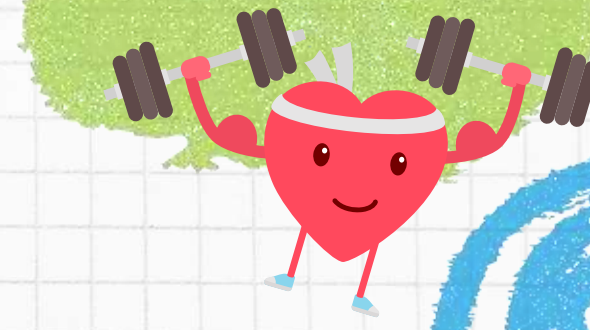
# 123, Healthy me programme!







# What is it about?



123, Healthy Me is a termly programme planned for our MK children to focus on helping them understand the importance of leading a healthy lifestyle. In this programme, children will learn about the different aspects of being healthy (Healthy Body, Healthy Mind and Healthy Heart) through activities such as

- Preparing healthy breakfast with parents (Healthy Body)
- Making emotion stress ball (Healthy Mind)
- Art Jam (Healthy Mind)

Through these activities, children will be able to demonstrate the different Values, Learning Dispositions and Social Emotional Competencies.





# Centre-based Programmes



Breakfast/Hi-Tea with Parents



Mass Workout with Parent Volunteers



Cookery Session-Making Healthy Snack







Stress Relief Activities





# MK Learning Environment

-  Creative use of available space to encourage children to discover and explore their surroundings
-  Safe and inviting indoor and outdoor spaces
-  Promotes learning through a variety of play, hands-on and interactive learning activities that are facilitated by the teachers or initiated by the children
-  Children spend at least 30 minutes outdoor daily



# Indoor Spaces

Thoughtfully designed classrooms and rich resources to support teaching and learning through play



Conducive and stimulating classroom environment to promote holistic development



Role play materials provide a context for children to use language and new vocabulary and develop communication skills



Variety of manipulatives to support development of fine motor skills, spatial awareness and problem-solving skills

## Outdoor Spaces

Carefully designed to provide a variety of play experiences



Water play features that encourage children to be little investigators



Playground equipment that develops children's movement skills and confidence



# Outdoor Spaces



Garden with features that engage children in sensory experiences



Creative layout of structures at sand play area that promotes free play for children

# MOE Kindergarten Fee



The monthly fee for MK in 2025 is:

🎈 \$160 for Singapore Citizens





🎈 \$320 for Singapore Permanent Residents

Fees are also payable during the June and December holidays as fees are calculated on an annual basis and spread over 12 months, including school holidays.

There are no additional out-of-pocket costs for complementary programmes such as field trips.



# Kindergarten Fee Assistance Scheme (KiFAS) Subsidy

-  KiFAS subsidy applies only to MK school fees
-  Eligible families with Singapore Citizen children may apply for KiFAS subsidy, which is provided by the Early Childhood Development Agency (ECDA), through MK.
-  The family needs to meet either the Gross Monthly Household Income (HHI) or the Gross Monthly Per Capita Income (PCI) criterion.
-  Your child must attend at least one day of the kindergarten for the month to qualify for the assistance, unless fully covered by a valid medical certificate (MC) that states the period of absence from the centre for the entire month (subject to ECDA's approval). Failure to do so will result in the full kindergarten fee being payable for the month.



# Kindergarten Fee Assistance Scheme (KiFAS)

Gross Monthly Household Income	Gross Per Capita Income	KiFAS Subsidy
\$3,000 and below	\$750 and below	\$159
\$3,001 - \$4,500	\$751 - \$1,125	\$148
\$4,501 - \$6,000	\$1,126 - \$1,500	\$105
\$6,001 - \$7,500	\$1,501 - \$1,875	\$85
\$7,501 - \$9,000	\$1,876 - \$2,250	\$65
\$9,001 - \$10,500	\$2,251 - \$2,625	\$45
\$10,501 - \$12,000	\$2,626 - \$3,000	\$15



# Kindergarten Care (KCare)

For parents who require a full-day service for their child

# What is KCare?

- ✧ Provides care services in a safe and conducive environment for children to **play, explore** and **discover** through specially designed environments with carefully chosen resources^
- ✧ Situated within MK premises
- ✧ Operates till 7pm, from Mondays to Fridays, including school holidays\*
- ✧ Operated by MOE-appointed service providers, based on MOE requirements and guidelines
- ✧ Time set aside for adequate rest
- ✧ Autonomy for children to decide what and how they want to play



*\*Closes for 6 days each year, in addition to gazetted public holidays, Teachers' Day and Children's Day.*

*^ Please note that KCare does not offer academic-related experiences.*

*Kcare is generally available to parents who require a full-day service for their child.*



# KCare

A variety of experiences through a) Modular Activities, b) Free Play and c) Dedicated Reading Time.

## **a) Modular Activities (1h per day)**

- 🎨 Art & Craft
- 👨‍🍳 Cookery
- 🌱 Gardening
- 🎵 Music, Movement & Dramatisation
- 🌊 Sand & Water Play
- 🔧 Tinkering

## **b) Free Play (1h per day)**




- 🏗️ Construction & Manipulative Free Play
- 🎭 Dramatic Free Play
- 🌳 Outdoor Free Play
- 🌊 Sand and Water Free Play

## **c) Dedicated Reading Time (at least 15 min)**

- 📖 Daily dedicated reading time
- 📖 Nurture a love for reading and develop good reading habits



## KCare Staff

-  Led by a KCare Centre Supervisor with early childhood qualifications.
-  Supported by a team of early childhood-trained staff with the disposition to care for and interact with children aged five to six years old.
-  Possess requisite competencies and skills to engage children in activities while ensuring their safety and well-being.



# KCare Team



Ms Weiling  
KCare Supervisor



Teacher Lia  
Untrained Programme Staff



Teacher Beilin  
Programme Staff



Teacher Sofia  
Programme Staff



Teacher Kristie  
Programme Staff



Teacher Ainul  
Programme Staff



Teacher Shamila  
Support Staff



Aunty Chua



# KCare Environment



Homeroom



Homeroom



Sensory Garden



Sand & Water Play Area



Dramatic Corner



Reading Corner



Toilets



children's artworks and activities printouts



# A Typical Day at KCare (Sample Timetable during School Terms)

Time	Activity
7.00 a.m. – 8.00 a.m.	Arrival and Health Check at MK
8.00 a.m. – 12.00 p.m.	MOE Kindergarten
12.00 – 12.30 p.m.	Arrival and Health Check
12.30 – 2.30 p.m.	Lunch, Wipe down, Rest / Nap
2.30 – 3.30 p.m.	Modular Activities / Indoor Free Play
3.30 – 3.45 p.m.	Afternoon Snack
3.45 – 4.00 p.m.	Dedicated Reading Time
4.00 – 5.00 p.m.	Modular Activities (Indoor/Outdoor) / Indoor/Outdoor Free Play
5.00 – 7.00 p.m.	Indoor / Outdoor Free Play, Quiet Time and Dismissal

**Note:**

- MK will receive KCare children at arrival between 7.00 a.m. and 8.00 a.m.
- Both MK and KCare staff will work out an arrangement for the smooth handover of the children.
- Outdoor activities can only be conducted after 4.00 p.m.





## A Typical Day at KCare (Sample Timetable during School Holidays)

Time	Activity
7.00 – 9.00 a.m.	Arrival and Health Check Breakfast and Indoor Free Play
9.00 a.m. – 11.00 a.m.	Holiday Activities (Outdoor) Morning Snack
11.00 a.m. – 11.15 a.m.	Dedicated Reading Time
11.15 a.m. – 12.15 p.m.	Modular Activities (Indoor)
12.15 p.m. – 2.45 p.m.	Lunch, Clean-up, Rest/Nap
2.45 p.m. – 3.00 p.m.	Dedicated Reading Time
3.00 p.m. – 3.30 p.m.	Afternoon Snack
3.30 p.m. – 5.00 p.m.	Holiday Activities (Indoor)
5.00 p.m. – 7.00 p.m.	Indoor / Outdoor Free Play, Quiet Time and Dismissal

\*Outdoor activities can only be conducted before 11.00 a.m. and after 4.00 p.m.





# KCare Fees

## Monthly fee for KCare in 2025

Singapore Citizen	Singapore Permanent Resident
Up to \$210 (Fee shown above is after \$150 basic subsidy*)	Up to \$360

You may utilise the KCare Eligibility Calculator available on the MOE website to determine if your child qualifies for the KCare additional subsidy:

<https://moe.gov.sg/preschool/moe-kindergarten/kindergarten-care>

\*Child must meet the minimum attendance requirement of one day per month at the centre to receive subsidies.

# A Smooth Transition to MK

# Kindergarten 1 (K1) Orientation

- 🎈 You and your child will be invited to an orientation session before the start of the K1 year, where you will meet with the kindergarten teachers and classmates. This will take place sometime in Oct / Nov 2025. More information will be shared at a later time.
- 🎈 This session will help to familiarise your child with the new learning environment.



# First Day of School

- ✈️ For the first day of school, you are welcome to accompany your child to the MK to help him or her through the routines in the kindergarten.
- ✈️ Teachers at the MK will keep a look out for children who experience adjustment challenges and work together with the parents to support the child's transition to the new learning environment.



# MK Partnerships



# Partnering our Primary Schools

**Close collaboration with primary schools to facilitate transition to P1**

- 🎈 Opportunities for interaction between MK children and primary school students
- 🎈 Planned activities in the K2 curriculum to support children's transition to P1
- 🎈 Collaboration between MK and lower primary teachers to establish shared understanding about children's learning and development



# Partnering Families & the Community

**Strong partnerships with families and the community to enrich children's learning experiences**

- Effective communication
- Active engagement
- Meaningful collaboration



## Leading and Inspiring Families of Early Learners @ MOE Kindergarten

- ✧ A series of centre-based workshops conducted by MK for parents
- ✧ Provides practical tips and advice on how parents can support children's learning at home
- ✧ Topics focus on holistic development, language development, how children learn and supporting children's transition from pre-school to primary school








# MK-Early Years Centre (EYC) Partnership

 Partnering three Anchor Operators:

- i. E-Bridge Pre-school (E-Bridge)
- ii. NTUC First Campus' My First Skool (MFS)
- iii. PCF Sparkletots Preschool (PCF Sparkletots)

 In this partnership, children aged two months to four years attend the partner EYC(s) offered by E-Bridge, MFS or PCF Sparkletots. Eligible Nursery 2 (N2) children enrolled in our partner EYC(s) are guaranteed a place at MK@Meridian and can choose to enrol at MK@Meridian to continue their K1 and K2 programme.

 Our MK's partner EYC(s) are:

- i. PCF Sparkletots Preschool @ Pasir Ris West Blk 650
- ii. PCF Sparkletots Preschool @ Pasir Ris West Blk 738

## In a nutshell ... why choose MK?

- ✧ Quality & Affordable Kindergarten Education
- ✧ Caring & Skilful Educators
- ✧ Spacious & Rich Learning Environment
- ✧ Holistic Curriculum in English & all three Mother Tongue Languages
- ✧ Smooth Transition to Primary School





## Info on MK Registration Exercise

- 🎈 Online registration for 2026 K1 admissions for both Open Admissions (OA) and Early Years Centre (EYC)\* children will open from 9 a.m. on Friday, 7 February 2025 and close at 4 p.m. on Monday, 17 February 2025^.
- 🎈 Open to Singapore Citizen and Permanent Resident children born between 2 Jan 2021 and 1 Jan 2022 (both dates inclusive).
- 🎈 Register your child at <https://go.gov.sg/mk-register> during the registration period.
- 🎈 You will be notified of the registration outcome via email by 15 April 2025.

*\* Eligible children from EYCs will receive an MK registration notification letter through the EYC that your child is enrolled in. More information on the registration process will be provided in the notification letter. If you decide to register your child in a non-partner MK, you can apply via Open Admissions (OA) registration form. Your application will be considered under the MK OA registration and subject to the same conditions as all other OA applications.*

*^Outside this registration period, parents can contact the MK directly to check for vacancies.*

**ON TO A STRONG START!**



**Thank you!**





Ministry of Education  
SINGAPORE





**Share your feedback with us!**



<https://go.gov.sg/feedbackmkoh2025>

# We get you ready for your preschool journey

**SCHOOLBAG**  
PARTNERING YOU ON YOUR EDUCATION JOURNEY

Hear from fellow parents and MOE educators on how your child can get more out of their school experiences. Subscribe to [Schoolbag.edu.sg](https://schoolbag.edu.sg) today!

SCAN TO SUBSCRIBE



[go.gov.sg/schoolbag-subscribe](https://go.gov.sg/schoolbag-subscribe)



**CHECK OUT  
SCHOOLBAG'S  
PRESCHOOL SECTION:**  
[go.gov.sg/schoolbag-preschool](https://go.gov.sg/schoolbag-preschool)

Brought to you by  
MOE Communications  
and Engagement Group



# Join us at MOE Kindergarten – **We Are Expanding!**



Do you have / Do you know someone who has..



An energetic  
personality?

Find out more about  
our MK careers at

[go.gov.sg/becomemke](https://go.gov.sg/becomemke)



A passion to nurture  
the next generation?

Join our mailing list to stay  
updated of career opportunities

[go.gov.sg/moecareersml](https://go.gov.sg/moecareersml)



Dedication towards  
sparking curiosity?

Join MOE Kindergarten as an English Medium or  
Mother Tongue Language Kindergarten Teacher