

Sharing on P5 Subject Based Banding (SBB), PSLE Achievement Levels (ALs) & S1 Posting



Summary

- **Assessment Weightage for 2020**
- **Recap on what is SBB & how does SBB work?**
- **SBB & Secondary School Admission**
- **Higher Mother Tongue**
- **Direct School Admission for secondary schools (DSA-Sec)**
- **Q & A**



Catering to Your Child's
Ability

Subject-Based Banding

FOR
PRIMARY SCHOOLS

Every child is unique, and has different aptitudes, capabilities and talents. Our schools believe in providing a balanced education that caters to the different abilities of each child so that we can prepare him for life.

Subject-based Banding (Pri) was introduced as a refinement to the streaming process to help each child realise his potential, based on his strengths and needs.

Assessment Weightage

Term 1	No Assessment
Term 2	No Assessment
Term 3	25% Weighted Assessment
Term 4	75% End-of-Year Examination



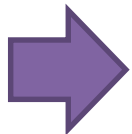
<https://meridianpri.moe.edu.sg/communications/assessment-matters/assessment-plan-2020>

Assessment Scoring (for 2020 P5)

Starting from the 2020 P5 cohort, schools will present school-based examination results of P5 and P6 students in Als

This will help familiarise students and parents with the new AL scoring system.

Holistic Development Profile (HDP)		
<u>Subject</u>	<u>Mark</u>	<u>AL</u>
English Language	85	2
Mathematics	75	4
Science	65	5
Mother Tongue Language	55	6
Total AL Score: 17		



<https://www.moe.gov.sg/microsites/psle/PSLE%20Scoring/psle-scoring.html>

How does SBB work?

P4

- School recommends a subject combination based on child's results at the end of the year.
- Parents fill up an option form indicating the preferred combination.

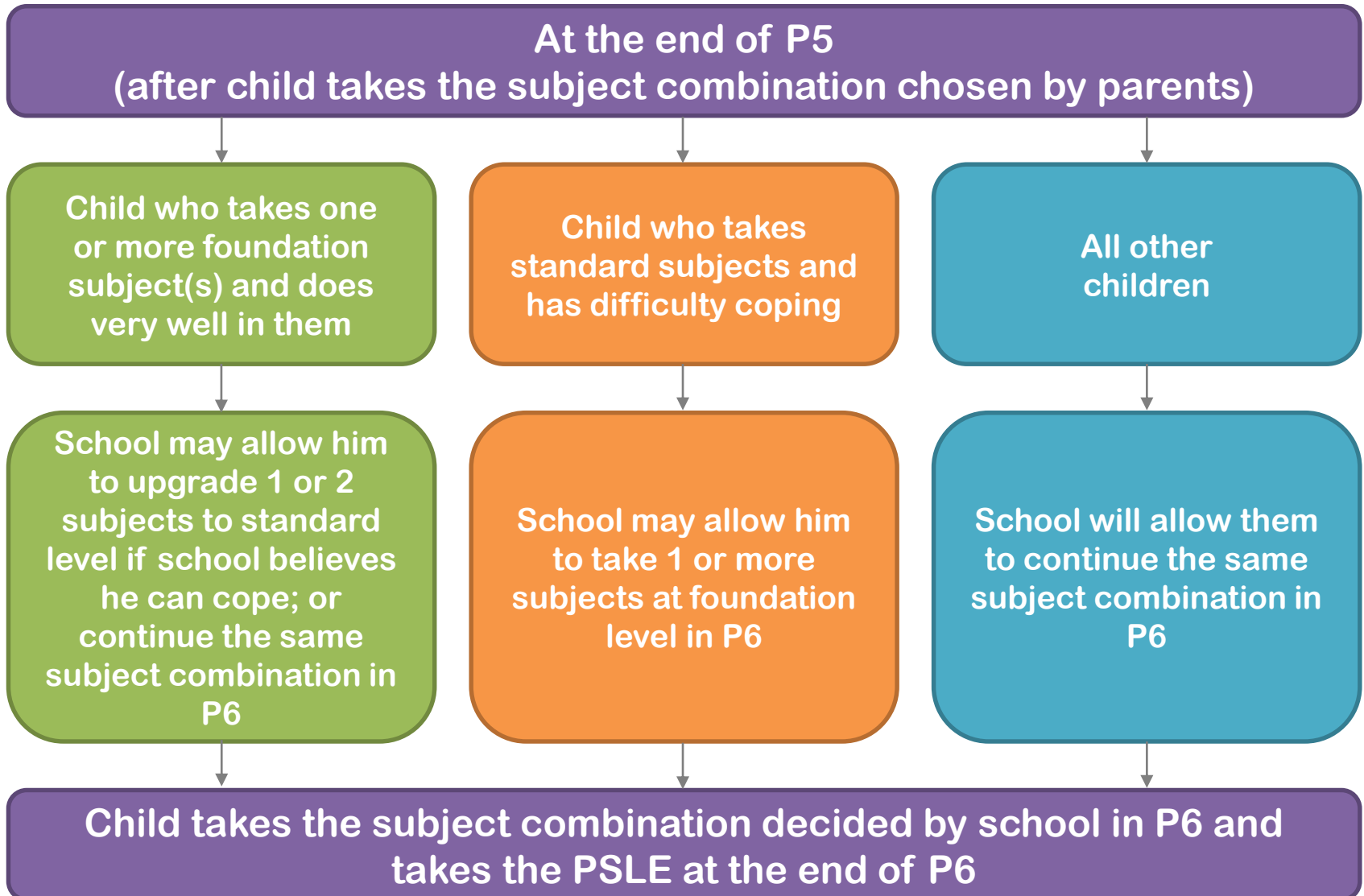
P5

- Child takes subject combination chosen by parents.
- **School assesses child's ability to cope with the subjects at the end of the year.**
- **Adjustments to the subject levels are made if needed.**

P6

- **Child takes subject combination decided by school and sits for the Primary School Leaving Examination (PSLE) at the end of Primary 6.**
- **Child's progression to secondary level depends on his/her PSLE results. If child excels in certain subjects, he/she can pursue higher level options in secondary school.**

How does SBB work?



Important factors

Foundation-level subjects at Primary 5 and 6

- Taking subjects at the foundation level is not a disadvantage to your child
- It enables him/her to focus on building up strong fundamentals in these subjects and better prepares him/her for progression to secondary school

Important factors to consider

Higher Mother Tongue (HMT)

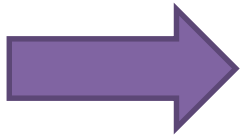
- For students taking HMT at P5, they will be allowed to continue with HMT in P6, provided they have met the criteria of obtaining at least 75% (AL 4) in all 4 subjects and a pass in HMT at the end of P5
- Studying HCL does not guarantee entry into Special Assistance Plan (SAP) schools*
- Students are still required to attain the entry requirements for SAP schools

** Note SAP schools offer only Chinese Language as Mother Tongue*

Direct School Admission

Direct School Admission for secondary schools (DSA-Sec)

- Promotes holistic education
- Provides opportunity to demonstrate a more diverse range of achievements and talents beyond academic achievement



<https://beta.moe.gov.sg/secondary/dsa/>

Direct School Admission

Primary 6 students can apply for DSA-Sec based on a wide-range of talents, including:

- Sports and games
- Visual, literary and performing arts
- Debate and public speaking
- Science, mathematics and engineering
- Languages and humanities
- Uniformed groups
- Leadership (for example, prefects)

Direct School Admission

An Example:

Pasir Ris Crest Secondary School



Pasir Ris
[11 Pasir Ris Street 41, S518934](#)



DSA-Sec talent areas offered

[Learn more about DSA-Sec.](#)

- Drama - English (Girls and Boys)
- Dance - Contemporary (Girls and Boys)
- Choir (Girls and Boys)
- Band - Concert (Girls and Boys)
- Communication (Girls and Boys)
- Ensemble - Guzheng (Girls and Boys)
- Orchestra - Chinese (Girls and Boys)
- Fencing (Girls and Boys)
- Language - Chinese (Girls and Boys)
- Language - Malay (Girls and Boys)
- Language - Tamil (Girls and Boys)

<https://beta.moe.gov.sg/secondary/dsa/>

Direct School Admission

Eligibility

- Secondary schools have different selection processes
- In general, applicants must be able to demonstrate their talent, potential, passion and character through their school track record and online DSA applications
- For example, your child might have:
 - Represented the school in competition(s)
 - Held a role in a play or performance
 - Done well in a subject such as Maths
 - Held a leadership role

Direct School Admission

Choose a school

- Programmes and activities
- Selection processes
- Academics
- School type
- Schools that only participate in DSA-Sec

When applying to multiple schools, bear in mind that each school may have trials, interviews or auditions that will take up your child's time.

Direct School Admission

Schools that only participate in DSA-Sec

The following specialised independent schools only accept students through the DSA-Sec process:

- **NUS High School of Mathematics and Science**
- **School of Science and Technology**
- **School of the Arts**

School that only conducts school-based admission

The following specialised independent school only accepts students through its own admission process:

- **Singapore Sports School**

Refer to the school's website for information on its application process and timeline

Direct School Admission

How to apply?

- Explore school choices (DSA-Sec portal)
- Apply by submitting your child's application online through the DSA-Sec portal
- Attend electronic interviews or auditions
- If successful, select up to 3 school choices preferred schools
- Receive school allocation along with PSLE results

Direct School Admission

Parents to Note:

If your child is admitted to a secondary school through DSA-Sec, he is not allowed to:

- Submit school choices during the Secondary 1 (S1) posting process
- Transfer to another school; he must commit to the chosen school for the duration of the programme

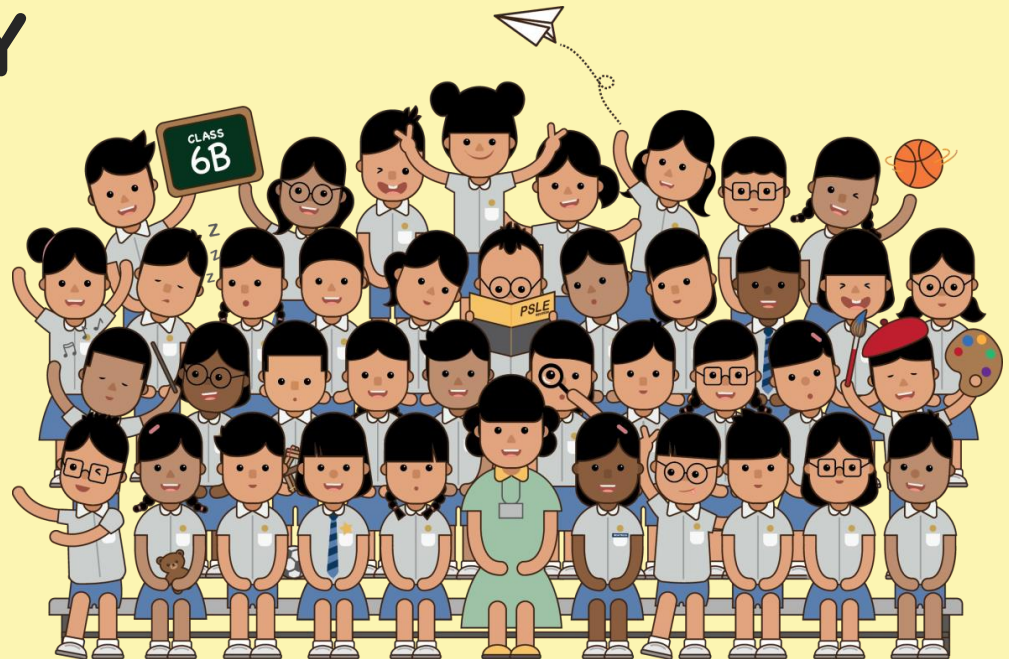
Your child's PSLE score still matters. Students offered placement in a DSA-Sec school still need a PSLE score that qualifies them for the course offered by the school.

SBB and Sec Sch Admission

- Progression to secondary level depends on your child's PSLE score
- The different expectations of standard and foundation subjects will be taken into account when your child's PSLE score is calculated
- If he/she excels in his/her subjects, he/she will have the opportunity to pursue higher-level options at secondary school level

CHANGES TO THE PSLE SCORING & S1 POSTING

IT'S PART OF
A BIGGER STORY



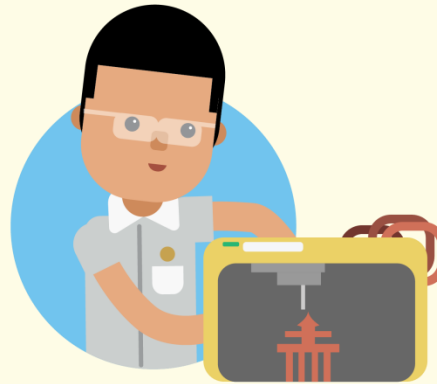
WHAT DO OUR CHILDREN NEED TO THRIVE IN THE FUTURE?



STRONG FOUNDATION

For example:

- Literacy
- Numeracy
- Social-emotional Competencies



21ST CENTURY COMPETENCIES

For example:

- Global awareness
- Critical and Inventive thinking
- Communication and Collaboration



VALUES

For example:

- Resilience
- Integrity
- Care

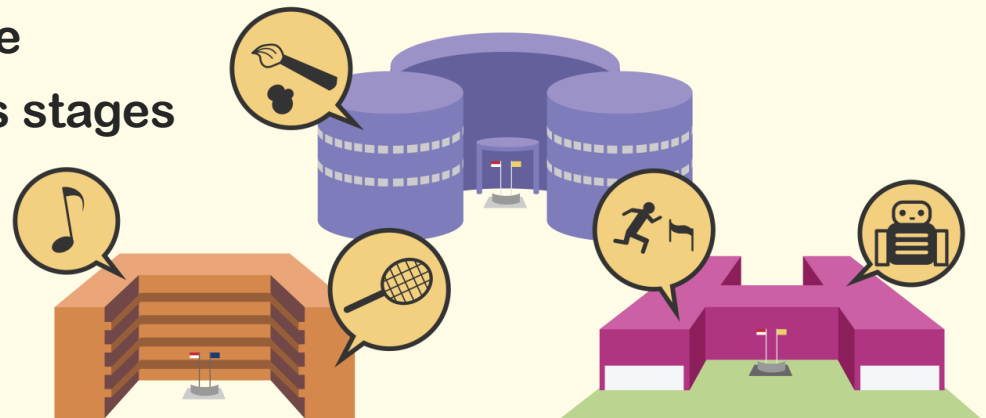
OUR EDUCATION SYSTEM AIMS TO:

NURTURE WELL-ROUNDED INDIVIDUALS

- Develop students holistically in every domain of learning
- Equip students with knowledge, skills, values and competencies for life

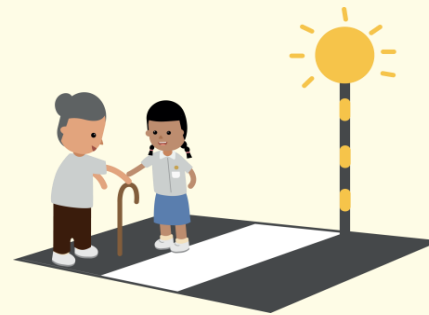
PROVIDE OPPORTUNITIES FOR CHILDREN TO DISCOVER AND DEVELOP THEIR STRENGTHS & INTERESTS

- Diversified school landscape
- Multiple pathways at various stages



THE PSLE CHANGES ARE PART OF A BIGGER STORY

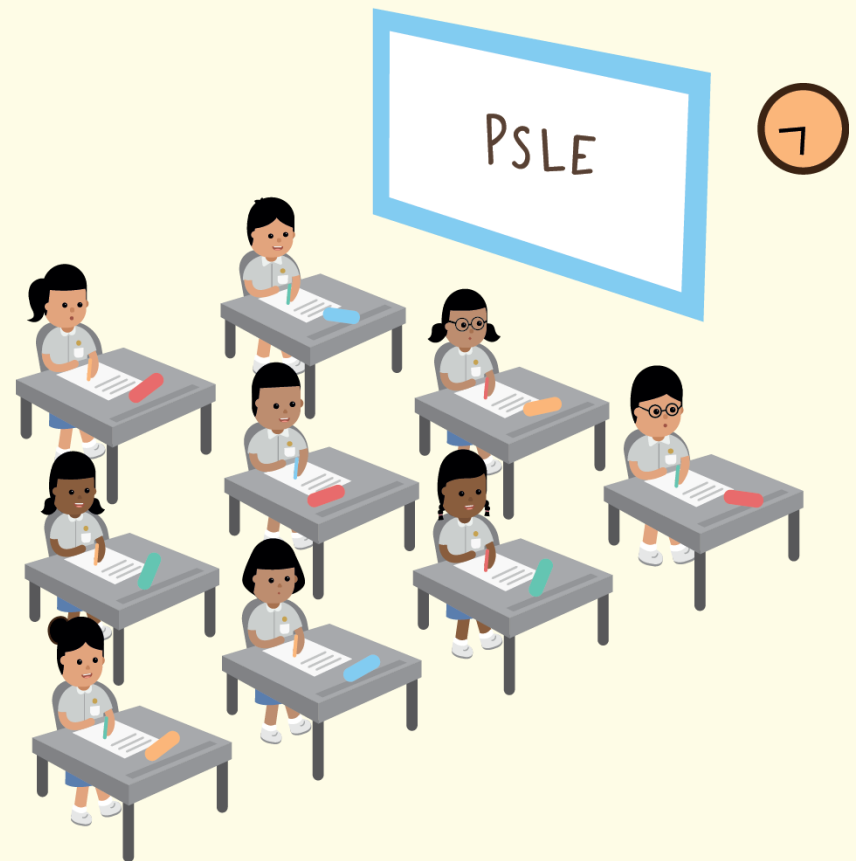
Over the years, we have been fine-tuning the education system to help our students discover and develop their strengths and interests while moving away from an over-emphasis on academic results. This will better enable them to lead fulfilling lives.



The changes to the PSLE scoring and S1 posting are another step in this direction.

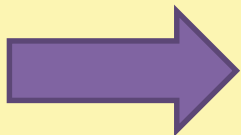
THE PSLE REMAINS A USEFUL CHECKPOINT

It gauges the level of students' learning in the core subjects at the end of six years of primary school and guides his future choices.

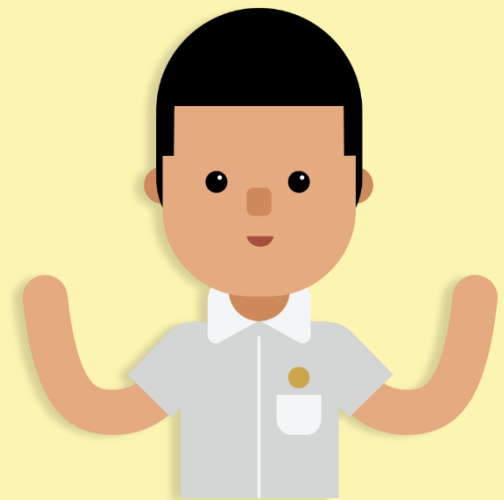


OVERVIEW

- How PSLE scoring works
- How S1 posting works
- Other issues
- Implementation
- Our hopes for our children



https://www.youtube.com/watch?v=XNhLvEk_B90



HOW PSLE SCORING WORKS



THE T-SCORE AGGREGATE DETERMINES S1 POSTING

- It shows how well a student has done compared to his cohort.
- The T-score Aggregate largely determines which secondary school a student is posted to.
- A student with 'better' letter grades may have a lower T-score Aggregate than a student with 'poorer' letter grades.

SUBJECT	GRADE
ENGLISH LANGUAGE	A
MOTHER TONGUE	A
MATHEMATICS	A*
SCIENCE	A*
T-SCORE AGGREGATE	244
SECONDARY SCHOOL COURSE ELIGIBLE FOR	EXPRESS

HOW THE T-SCORE AGGREGATE AFFECTS STUDENTS

- It finely differentiates students.
- It shows how well students have done relative to their peers.



WHAT THE NEW PSLE SCORING SYSTEM AIMS TO DO

- Reduce fine differentiation of students at a young age based on exam scores.
- Recognise a student's level of achievement in each subject, regardless of how his peers have done.



STUDENTS WITH SIMILAR SCORES IN EACH SUBJECT WILL BE GROUPED INTO THE SAME ACHIEVEMENT LEVEL

- There will be 8 Achievement Levels (ALs), with AL1 being the best.
- A student's AL for each subject will reflect his level of achievement, rather than how he has performed relative to his peers.

PER SUBJECT
AL 1 (BEST)
AL 2
AL 3
AL 4
AL 5
AL 6
AL 7
AL 8 (UNGRADED)

WHY 8 ACHIEVEMENT LEVELS?

- This offers a good balance.
- It reduces fine differentiation between students while still giving parents and educators a gauge of a student's progress at the end of primary school.
- Students can then be matched to suitable academic programmes in secondary schools.

PER SUBJECT
AL 1 (BEST)
AL 2
AL 3
AL 4
AL 5
AL 6
AL 7
AL 8 (UNGRADED)

REFERENCE RAW MARK RANGES

- To guide school-based assessments, we will provide reference raw mark ranges for each AL.
- These are based on learning objectives of the curriculum.

CONSIDERATIONS

- To have educationally meaningful differentiation of students.
- At the top ALs, the ranges are narrower as the PSLE is designed to show what students can do – on average, about half of the students will score AL4 or better.

AL	RAW MARK RANGE
1	≥ 90
2	85 – 89
3	80 – 84
4	75 – 79
5	65 – 74
6	45 – 64
7	20 – 44
8	< 20

FOUNDATION-LEVEL SUBJECTS WILL ALSO BE SCORED ON ACHIEVEMENT LEVELS

- Foundation-level subjects are designed to support a small number of students who may not be able to cope with Standard-level subjects.
- This enables them to focus on building up strong fundamentals so that they are better prepared for secondary school.
- This way, the student will also build confidence to pursue learning at a level suitable for them.



4 SUBJECT ALs WILL BE ADDED TO FORM THE PSLE SCORE

- The PSLE Score replaces the T-score Aggregate.
- The PSLE Score ranges from 4 to 32, with 4 being the best.
- Compared to the T-score Aggregate, students are less finely differentiated.



ENGLISH	AL3
MOTHER TONGUE	AL2
MATHEMATICS	AL1
SCIENCE	AL2

PSLE SCORE: 8

STUDENTS WILL BE STREAMED BY THEIR PSLE SCORE

- Students will continue to be placed in the appropriate Secondary School courses – Express, Normal (Academic), Normal (Technical) or option bands.

PLACEMENT OUTCOME	PSLE SCORE
EXPRESS	4 – 20
EXPRESS / N(A) option	21 – 22
N(A)	23 – 24
N(A) / N(T) option	25
N(T)	26 – 30, with AL7 or better in both EL <u>and</u> MA

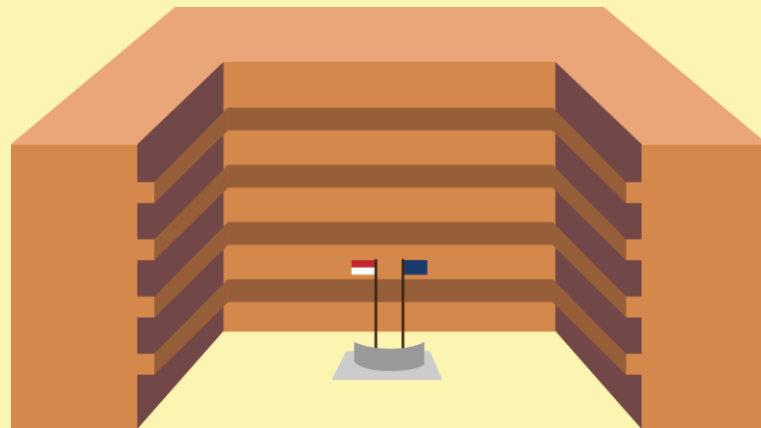
WHAT REMAINS

- Same 4 subjects are tested, and scores are awarded to guide students' choices for the next stage of their education journey
- Subject curriculum will be continually updated. This is not related to the PSLE scoring and S1 posting changes.

WHAT CHANGES

- The T-score Aggregate will be replaced by the PSLE Score, to reduce the fine differentiation of our students at a young age based on exam scores.
- A student's AL for each subject will reflect his own achievement, rather than how he has performed relative to his peers.

HOW S1 POSTING WORKS



HOW S1 POSTING WORKS TODAY

- The **T-score Aggregate** is the first **criterion** for posting.
- Students are posted based on their choice order of schools, starting from the first choice.
- If all the places in the first-choice school have been filled, the school that is second on the list will be considered.
- But the order in which a student lists the schools does not give him priority when deciding who will get a place.




CURRENT SYSTEM

HOW CHOICE ORDER MATTERS TODAY


- 3 Singaporean students have chosen School F as one of their choices, but there are only 2 places left in the school.
- Azlina and Colin were not successfully posted to schools higher in their choices.

T-SCORE AGGREGATE

 **Azlina** **210**


⋮
4. ~~School A~~
5. ~~School C~~
6. School F

T-SCORE AGGREGATE

 **Bala** **209**

1. School F
2. School B
3. School D
⋮

T-SCORE AGGREGATE


 **Colin** **209**

1. ~~School B~~
2. School F
3. School D
⋮


CURRENT SYSTEM

HOW CHOICE ORDER MATTERS TODAY


- Places are allocated based on the T-score Aggregate first so Azlina is allocated a place.

1  **Azlina** **T-SCORE AGGREGATE 210**

⋮
4. ~~School A~~
5. ~~School C~~
6. School F

 **Bala** **T-SCORE AGGREGATE 209**

1. **School F**
2. **School B**
3. **School D**
⋮


 **Colin** **T-SCORE AGGREGATE 209**

1. ~~School B~~
2. **School F**
3. **School D**
⋮


CURRENT SYSTEM

HOW CHOICE ORDER MATTERS TODAY


- Bala and Colin have the same T-score Aggregate.
- Although Bala placed School F as his first choice, he does not have a priority for posting over Colin.
- To decide who is allocated the remaining space, tie-breakers (e.g. computerised balloting) will be used between Bala and Colin.

1  **T-SCORE AGGREGATE**
Azlina **210**

⋮
4. ~~School A~~
5. ~~School C~~
6. ~~School F~~

 **T-SCORE AGGREGATE**
Bala **209**

1. **School F**
2. School B
3. School D
⋮

 **T-SCORE AGGREGATE**
Colin **209**

1. ~~School B~~
2. **School F**
3. School D
⋮

HOW POSTING WILL WORK

The **PSLE Score** will be the **first criterion** for posting.

If 2 students with the same **PSLE Score** vie for a place in a school, the following tie-breakers will be used.

1. CITIZENSHIP

(Singapore Citizens, Permanent Residents,
then International Students)


2. CHOICE ORDER OF SCHOOLS (NEW)

3. COMPUTERISED BALLOTING



CHOICE ORDER IN THE NEW SYSTEM

- Again, suppose the same three Singaporean students have chosen School F as one of their choices, but there are only 2 places left in the school.
- Azlina and Colin were not successfully posted to schools higher in their choices.

 **PSLE SCORE**


Azlina **16**

⋮

4. School A

5. School C

6. School F

 **PSLE SCORE**

Bala **17**

1. School F

2. School B

3. School D

⋮

 **PSLE SCORE**

Colin **17**

1. School B


2. School F

3. School D


⋮

CHOICE ORDER IN THE NEW SYSTEM


- Places are allocated based on PSLE Scores first, so Azlina is allocated a place (similar to today).

1  **PSLE SCORE**
Azlina **16**

⋮
 4. ~~School A~~
 5. ~~School C~~
6. School F

 **PSLE SCORE**
Bala **17**


1. ~~School F~~
 2. ~~School B~~
 3. ~~School D~~
 ⋮

 **PSLE SCORE**
Colin **17**

1. ~~School B~~
 2. ~~School F~~
 3. ~~School D~~
 ⋮

CHOICE ORDER IN THE NEW SYSTEM


- Bala and Colin have the same PSLE Score.
- To decide who is allocated the remaining space, tie-breakers will be used between Bala and Colin.
- Bala placed School F as a higher choice compared to Colin, so Bala will be allocated the remaining place in School F.

1  PSLE SCORE

Azlina	16
--------	----

⋮

- School A
- School C
- School F

2  PSLE SCORE

Bala	17
------	----

- School F**
- School B
- School D

⋮

 PSLE SCORE

Colin	17
-------	----

- School B
- School F**
- School D

⋮

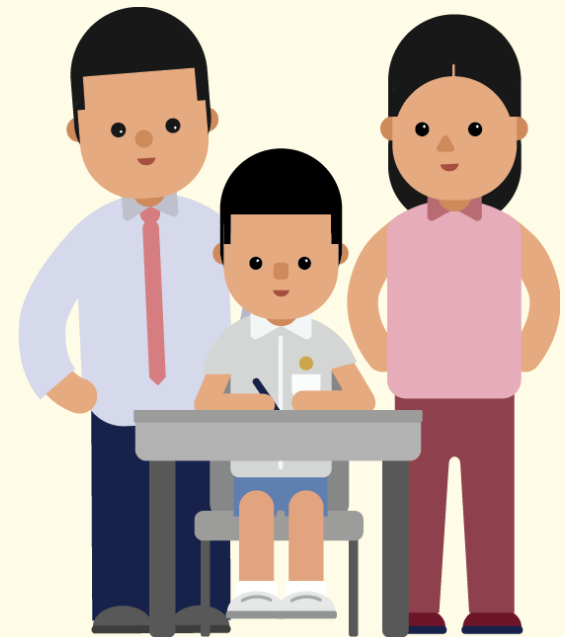
CHOICE ORDER OF SCHOOLS TO MATTER MORE

WITH BROADER SCORING BANDS:

- More students will have the same PSLE Score.
- Schools will be less differentiated based on cut-off points.

WHY CHOICE?

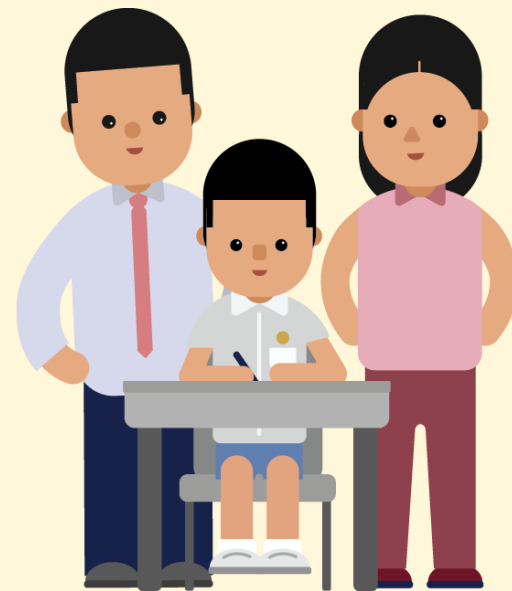
We recognise that families have different considerations when choosing secondary schools, for example, the school's ethos, culture, programmes and CCAs, as well as distance between the school and home.



Academic merit remains the **first criterion** for secondary school posting. Choice order will be a new tie-breaker.

NEW SYSTEM

- Choice order is introduced as a new tie-breaker to recognise the different considerations that families have in making school choices.
- To guide families, we will provide information on each school's unique programmes and indicative cut-off points.



IMPLEMENTATION



THE CHANGES WILL BE IMPLEMENTED FOR THE 2021 PSLE COHORT (2016 Primary 1 cohort)

IN THE MEANTIME, WE WILL:

- Engage parents and other stakeholders to help them understand the new system.
- Allow schools, parents and students time to familiarise themselves with the new system
- Share secondary schools' distinctive programmes with parents and students, so students can choose schools that fit their learning needs, interests and strengths.



OUR HOPES FOR OUR CHILDREN

LOOKING BEYOND ACADEMIC RESULTS



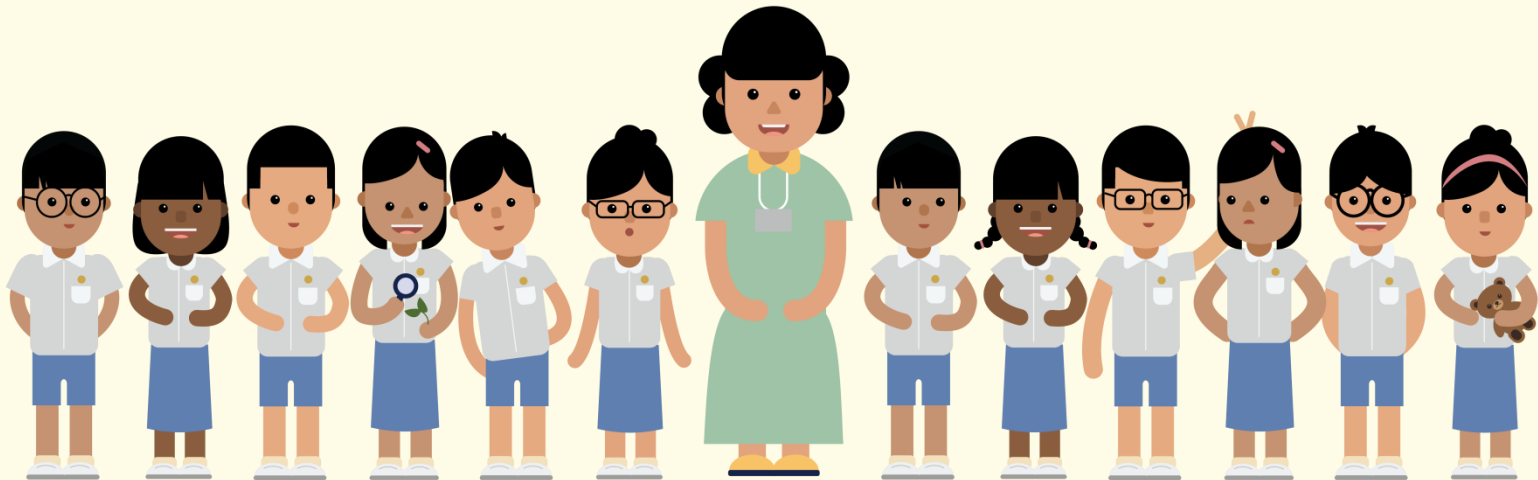
REDUCE OVER-EMPHASIS ON ACADEMIC RESULTS

- **Achievement Levels** will reflect student's level of achievement, regardless of how his peers have done.
- **PSLE Scores** replace **T-score Aggregates**, reducing fine differentiation.
- **Choice order** is a new tie-breaker to recognise the different considerations that students and parents have in making school choices.



WE WANT OUR CHILDREN TO:

- Develop different aspects of their character.
- Know that there are different kinds of talents, academic and non-academic.
- Know that grades are just a part of their story.
- Understand that there are many paths to a fulfilling life.

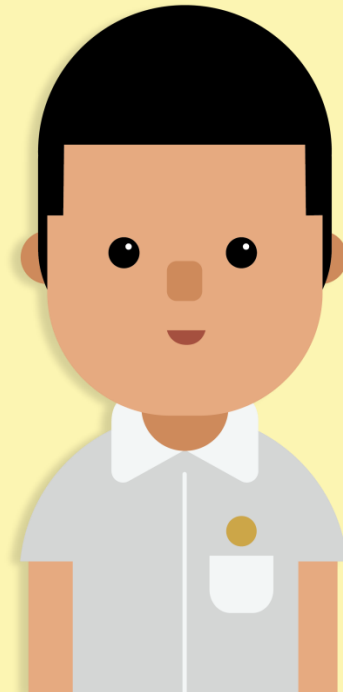


**PARENTS
TEACHERS
COMMUNITY**

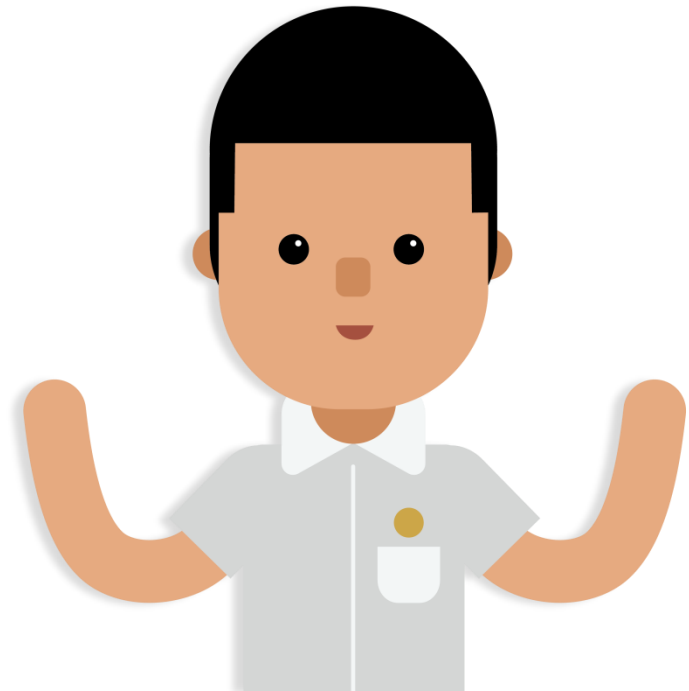
**LET US WRITE THE NEXT CHAPTER
OF THIS STORY TOGETHER...**



OTHER ISSUES



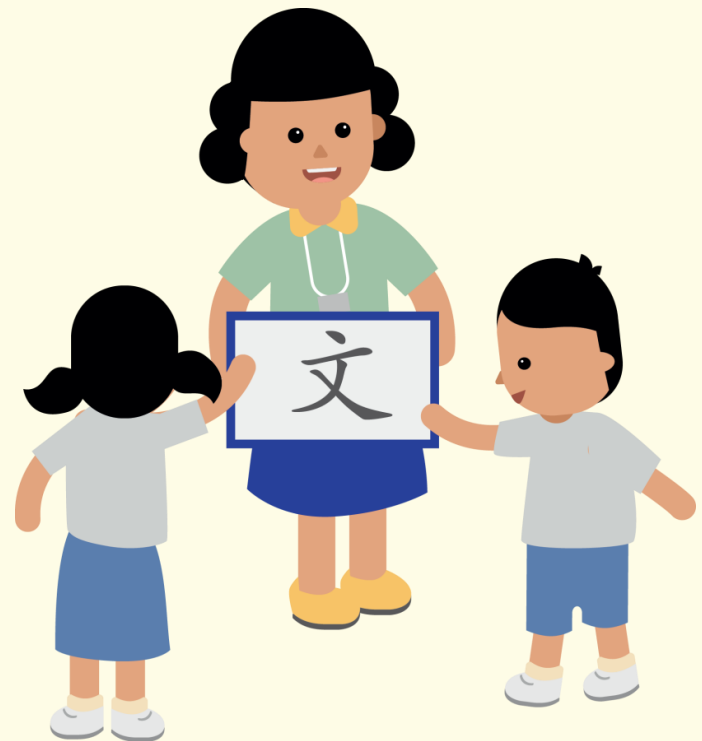
USE OF HCL FOR ADMISSION INTO SAP SCHOOLS



STUDENTS' HCL GRADES GIVE POSTING ADVANTAGE FOR SAP SCHOOLS







Currently, for admission to SAP schools, students are awarded bonus T-score points based on their HCL grade:

- 3 points for Distinction
- 2 points for Merit
- 1 point for Pass



THIS HCL POSTING ADVANTAGE FOR ENTRY TO SAP SCHOOLS WILL CONTINUE

- Students will be ranked taking into account their performance in HCL.
- This posting advantage applies before the tie-breakers for S1 posting.

1st		7	NO HCL
2nd		8	DISTINCTION
3rd		8	MERIT
4th		8	PASS
5th		8	NO HCL
6th		9	DISTINCTION

Thank you!

